



015-20222

*“Setting the World’s
Performance Standards”*

743 East Iona Road, Idaho Falls, ID 83401, (208) 529-0244 Fax (208) 529-9000

Clutch Press Tool

**For Arctic Cat Rapid Response Primary and BOSS Secondary
Clutches, ALL Polaris RZR Primary and
TEAM Tied Secondary Clutches
Part # 20-222**

Kit Contents:

- 1) 1 - Push Ring (#20-2224)
- 2) 1 - Handle Assembly (#20-2223)
- 3) 1 - Upright (#20-2222)
- 4) 1 - Clutch Press Base (#20-2221)
- 5) 2 - 8mm x 1.25 x 40mm Bolt (#999-7989)
- 6) 2 - 8mm x 1.25 Nylock Nut (#999-7991)
- 7) 1 - Ball Retention Pin (#999-0301)

Clutch Press Assembly:

1. Install upright to the clutch press base using the provided 8mm x 1.25 x 40mm bolt and 8mm x 1.25 nylock nut on the side of the upright with just the single bolt hole. **Note:** Do not over tighten nut it should be tightened just snug so that the upright still moves freely front to back.

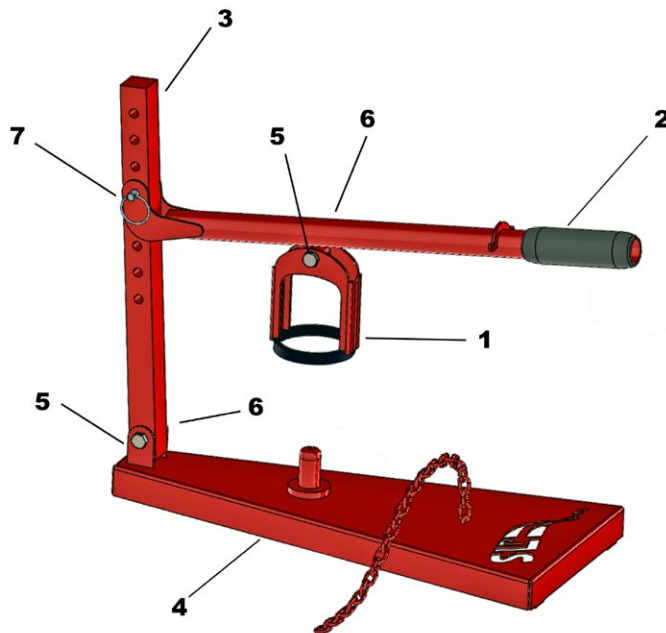
2. Install push ring to the handle assembly using the provided 8mm x 1.25 x 40mm bolt and 8mm x 1.25 nylock nut. **Note:** For easiest removal of the snap ring when servicing the secondary clutch, install the bolt with nut on the opposite side of the hand that will be using the snap ring pliers.

3. Install handle assembly to the upright using the provided ball retention pin.

Primary Clutch Spring and/or Weight Removal and Assembly:

1. Set clutch on the base. See (illustration #1).

2. Press down on the handle to compress the clutch and lock in desired position with the chain. Bolts



can now be removed from clutch face, or weights can be changed.

Driven Clutch Disassembly on TEAM Tied/ BOSS Secondary Clutch

1. If helix is installed remove the torx screw holding it into place and remove helix.
2. Place secondary clutch onto the clutch press base.
3. Lower the push ring down against the spring retainer hub and compress. Using the chain attached to the base lock the handle into desired position.
4. Remove snap ring. Pressing down on the handle and holding firmly, remove the chain and carefully relieve pressure from the spring.

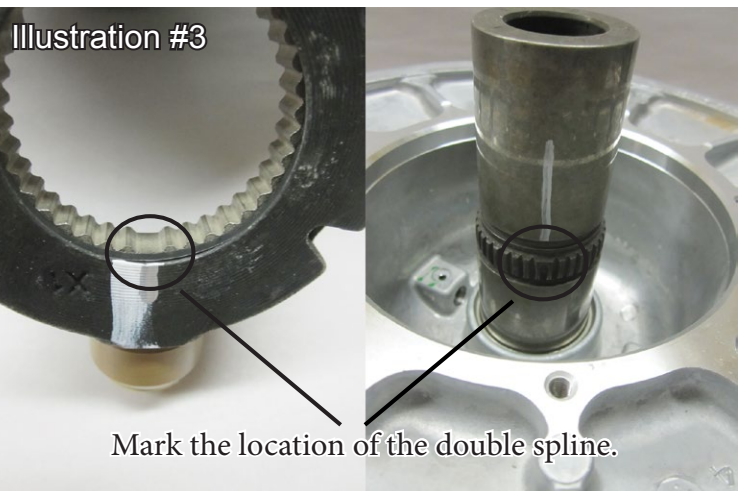
Secondary Clutch Assembly on TEAM Tied/ BOSS Secondary Clutch

1. The spring retainer hub and shaft have a double spline that has to line up for installation. It is easiest to mark the exact location of this double spline on the spider and shaft before assembly. (see illustration #3).
2. Place secondary clutch onto the clutch press base and set the secondary spring into the clutch.
3. Install spring retainer hub by first aligning the marks made in step 1. Then compress the clutch press handle, you may have to move the handle front to back slightly until the hub slides into place on the splines. Lock the handle using the chain.
4. Install the snap ring making sure it snaps completely into the snap ring groove.
5. Install the helix making sure to Line up the X on the helix with the X on the clutch and drop the helix into place. (Refer to illustration #6) Install the four torx head screws.

Illustration #1



Illustration #2



Mark the location of the double spline.