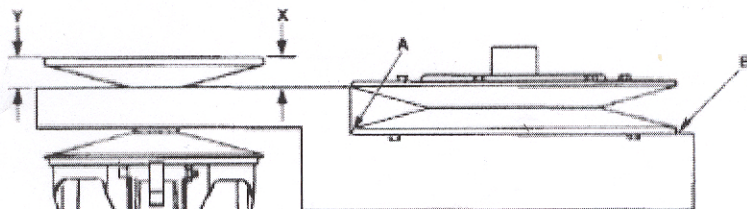


## Checking Offset

If premature belt wear is experienced, the clutch offset and parallelism must be checked. To check this, use the **TEAM Clutch Alignment tool** specified for your sled and follow instructions shown below.



- 1.) Open the clutch guard and remove the belt.
- 2.) Install the clutch alignment bar between the drive clutch sheaves and against the outside edge of the Team driven stationary sheave.
- 3.) Allow alignment bar to rest on the drive clutch shaft.
- 4.) With the bar flush at points A and B, the front portion of the bar should just clear the inside edge of the stationary sheave or be within .030 with the bar resting on the stationary shaft.