



*"Setting the World's
Performance Standards!"*

743 E. Iona Rd. Idaho Falls, ID 83401, (208)529-0244 Fax (208)529-9000

SLP Performance Muffler for 2012-14 Polaris XP 900 RZR and RZR-4 Part# 09-110

Kit Contents:

- | | |
|---|-----------------------------|
| 1 - Hitch Pin (#998-5615) | 1 - Flat Washer (#998-5616) |
| 1 - Hair Pin Clip (#998-5612) | 1 - Silencer |
| 1 - Screw (#999-1083) | 1 - Nut (#999-1082) |
| 1 - Screen Type Spark Arrestor (#1262123) | 1 - Muffler (#090-110) |
| 1 - SLP Decal (#60-60) | |

THIS SILENCER IS NOT U.S. FORREST SERVICE APPROVED.

1. Using a spray lubricant such as WD-40, spray the stock rubber grommets and remove them using large flat blade screwdriver. Unspring bottom of silencer and silencer to header then remove silencer. Reinstall rubber grommets and retain header to silencer seal.
2. Lube inside of rubber grommets and install SLP silencer. Insert left side pin first into the grommet and then connect header pipe to header. Install provided flat washer onto hitch pin and onto the right side through rubber grommet and into silencer mounting tab. After hitch pin is pushed into silencer mounting tab install hair pin into the hitch pin.
3. Spring silencer into place using OEM springs.
4. This silencer is not USFS Approved but at your own discretion you can install the provided screen type spark arrestor and the one from your stock silencer.

Note: The RZR/RZR-4 XP 900 operates best between 8000-8300 RPM @ WOT. If the RPM is not in this range after the SLP Performance Muffler is installed, clutching changes may be required for optimum performance. Other performance modifications or high performance cams can also change the operating RPM. Please inquire for more information.

Also available for the RZR XP 900:

Power Shift™ Clutch Kits



Performance Kits



SLP Doors



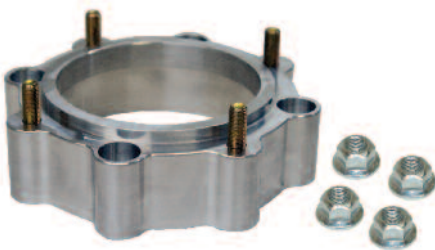
Power Vision 3 (PV3)



Infrared Belt Temp Gauge



Wheel Spacer Kits



Intake Vents



Tools

